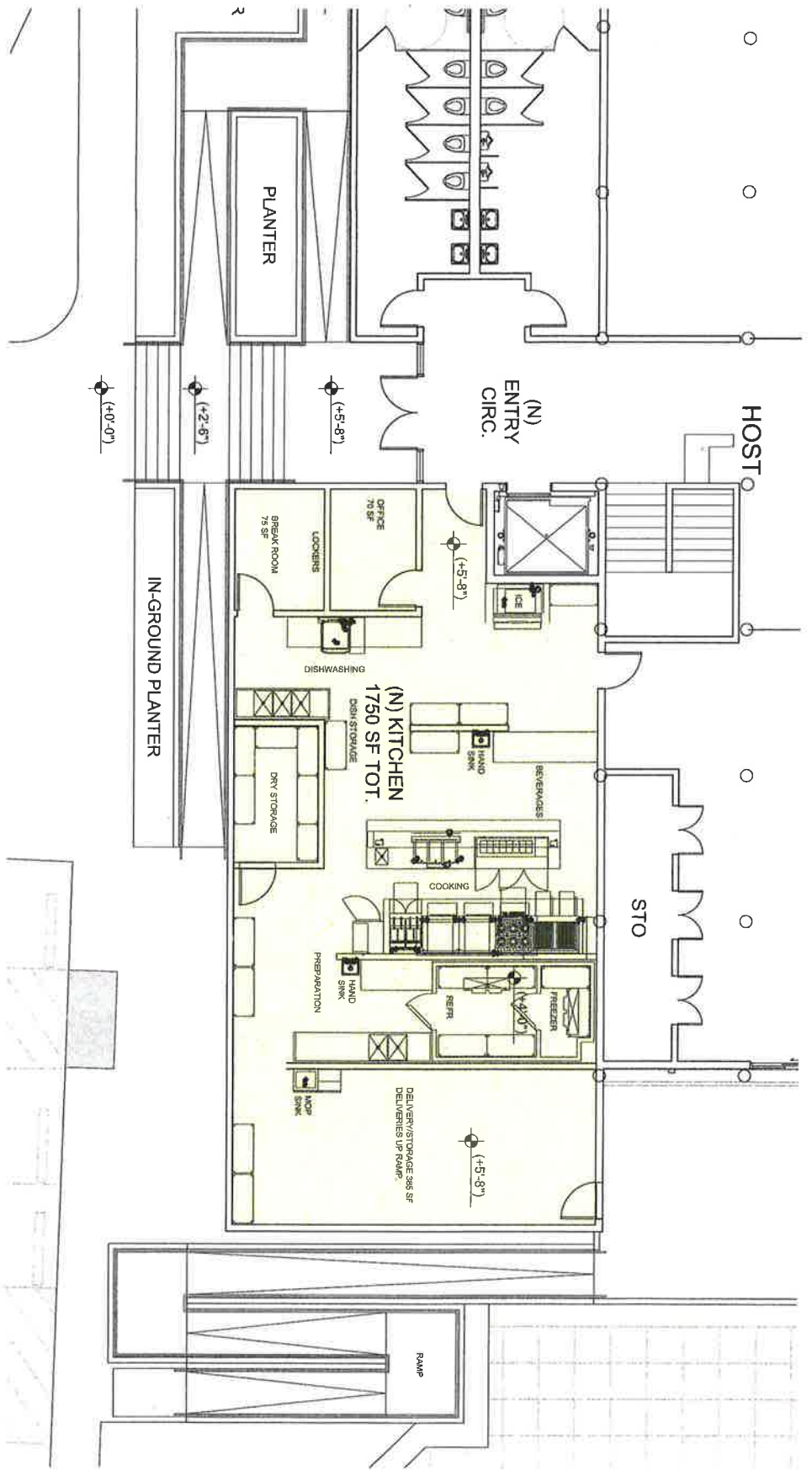
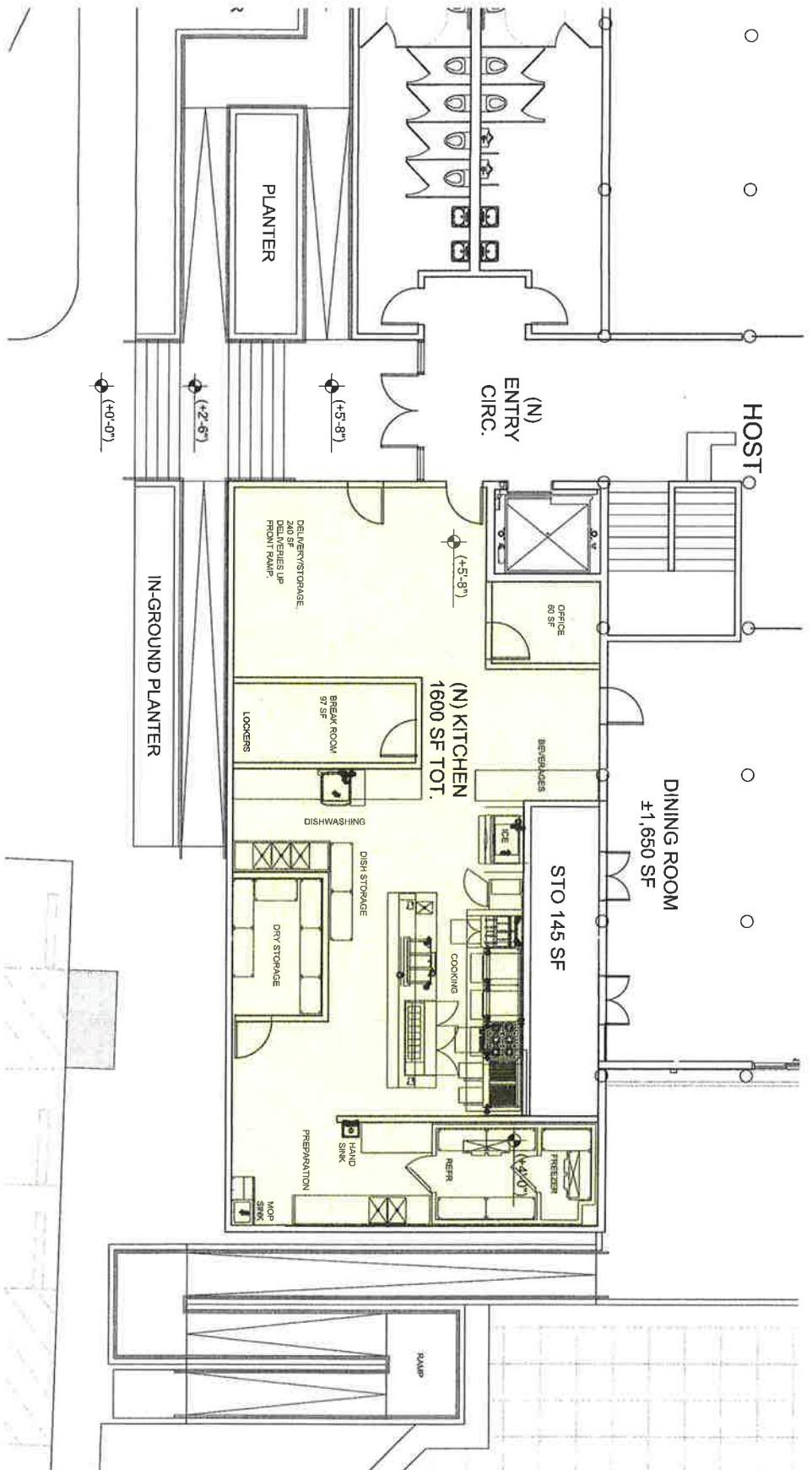


**SUMMARY**  
 -1750 SF OF KITCHEN AREA TOTAL  
 -DELIVERIES COME UP FRONT MAIN RAMP  
 -255 SF OF STORAGE AT DELIVERY AREA  
 -DINING ROOM STORAGE IS IN DINING ROOM



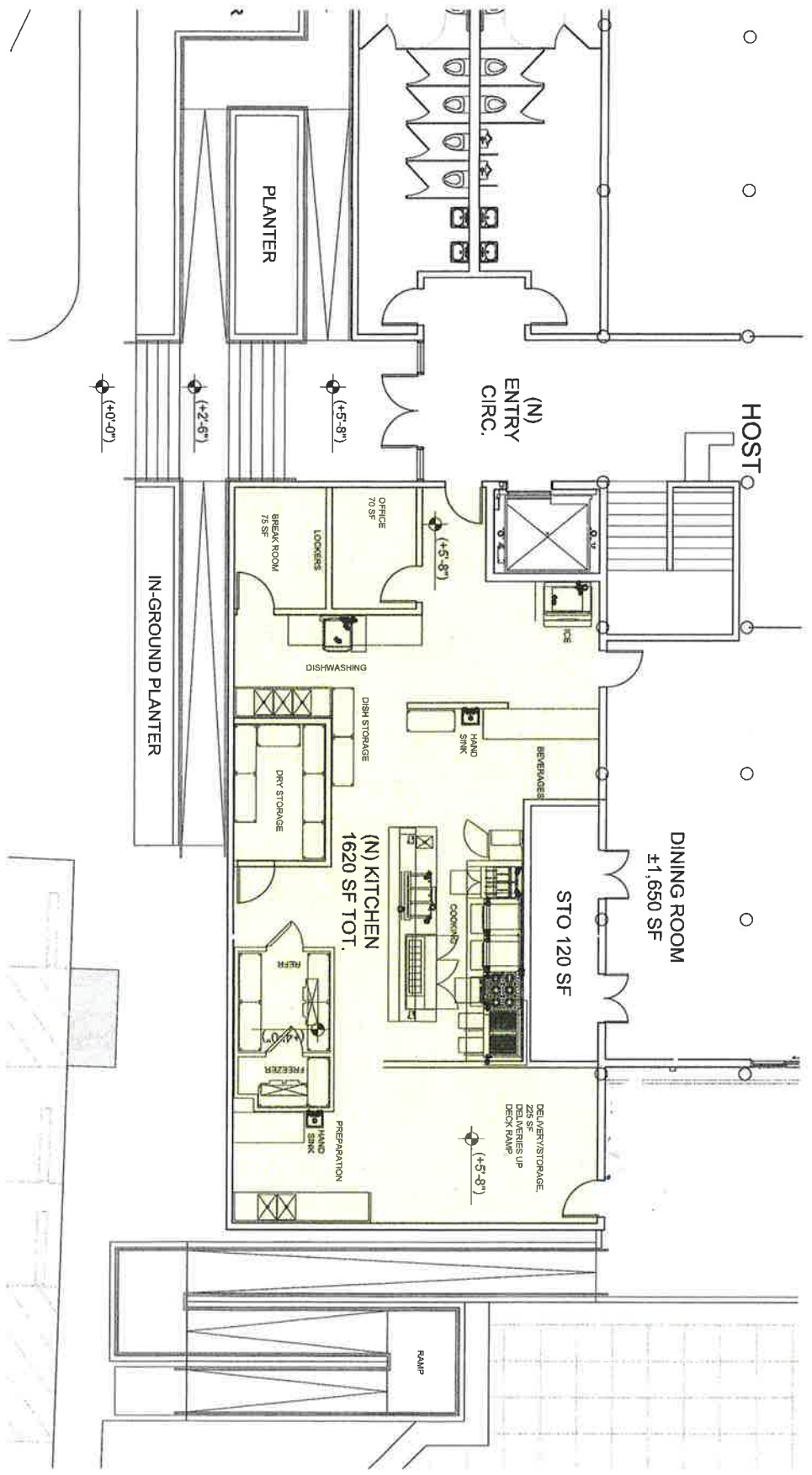
**SUMMARY**  
 -1750 SF OF KITCHEN AREA TOTAL  
 -DELIVERIES COME UP REAR POOL DECK RAMP  
 -385 SF OF STORAGE AT DELIVERY AREA  
 -DINING ROOM STORAGE IS IN DINING ROOM

2

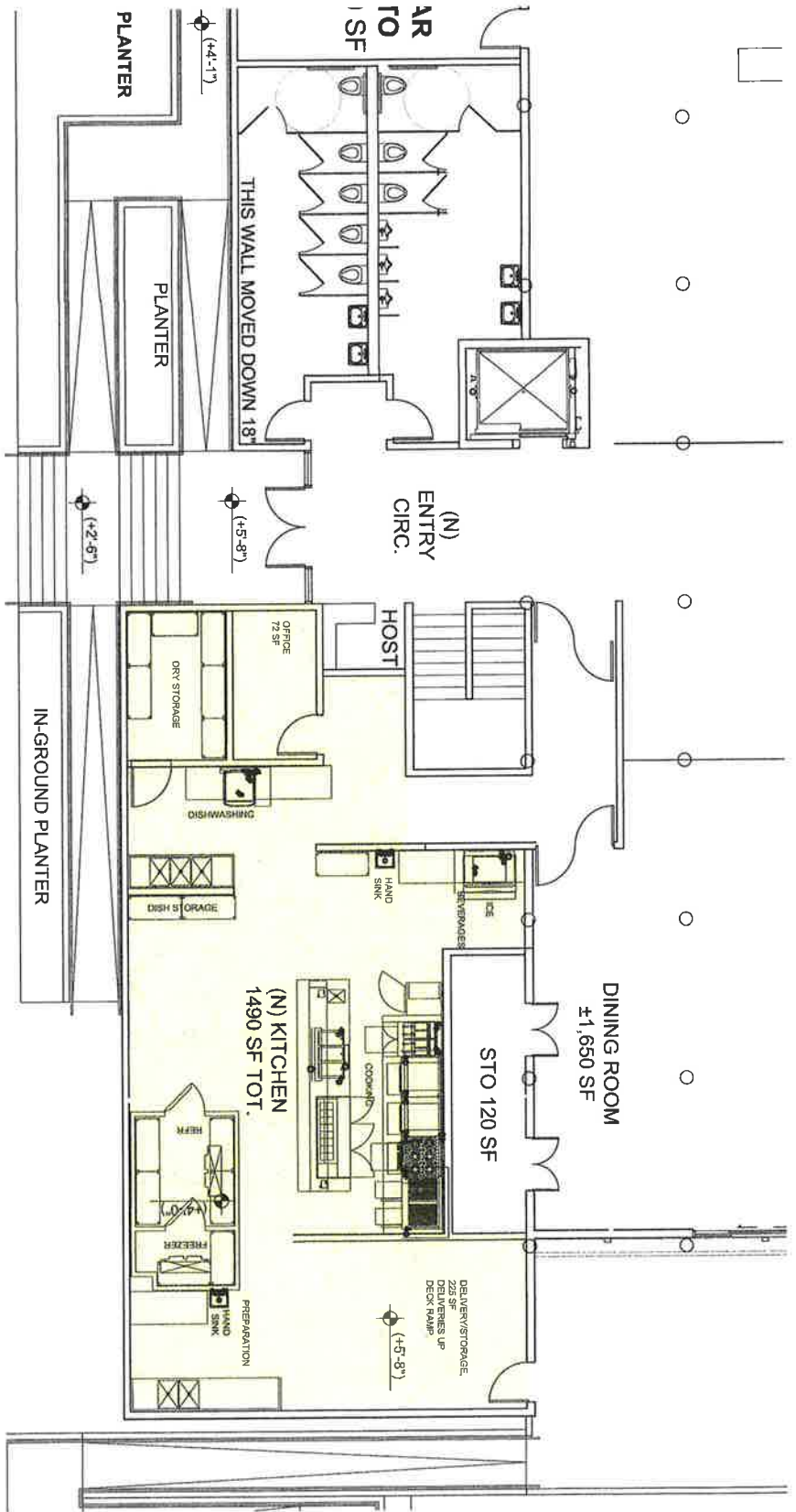


- SUMMARY**
- 1600 SF OF KITCHEN AREA TOTAL
  - DELIVERIES COME UP MAIN FRONT RAMP
  - 240 SF OF STORAGE AT DELIVERY AREA
  - 145 SF DINING ROOM STORAGE IS PUSHED INTO KITCHEN SPACE

3



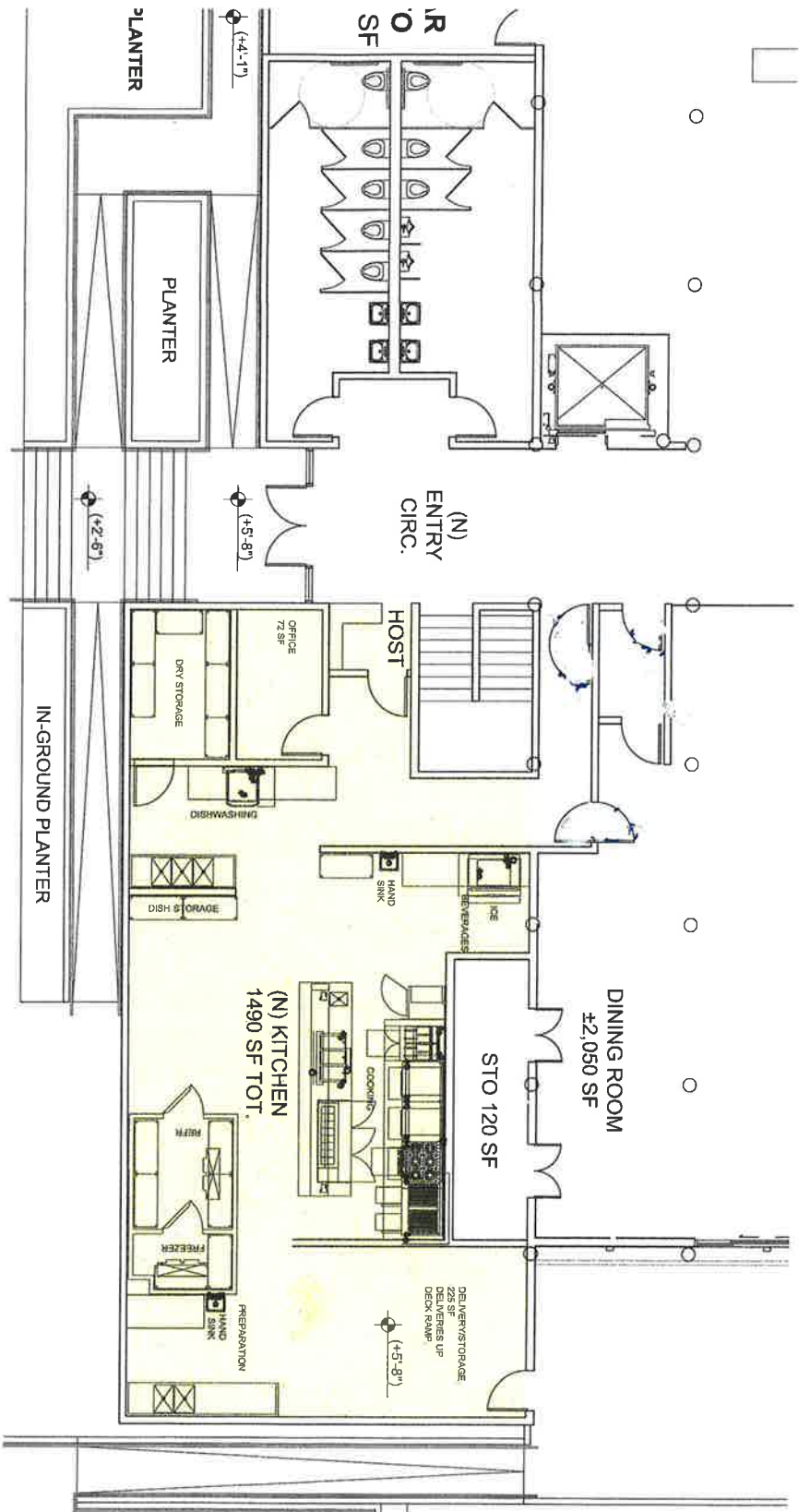
- SUMMARY**
- 1620 SF OF KITCHEN AREA TOTAL
  - DELIVERIES COME UP REAR POOL DECK RAMP
  - 225 SF OF STORAGE AT DELIVERY AREA
  - 120 SF DINING ROOM STORAGE IS PUSHED INTO KITCHEN SPACE



- SUMMARY**
- 1490 SF OF KITCHEN AREA TOTAL
  - DELIVERIES COME UP REAR POOL DECK RAMP
  - 228 SF OF STORAGE AT DELIVERY AREA
  - 120 SF DINING ROOM STORAGE IS PUSHED INTO KITCHEN SPACE
  - STAIR MOVED DOWN AND ACCESS CORRIDOR CREATED TO ALLOW SEPARATE KITCHEN ACCES TO DINING AND CONDOR ROOM/BAR AREAS
  - HOST AREA AT ENTRY LOBBY
  - ELEVATOR MOVED ACROSS LOBBY AND PARTIALLY INTO CONDOR/BAR AREA
  - FRONT WALL AT RESTROOMS AND ENTRY DOORS MOVED DOWN 18"

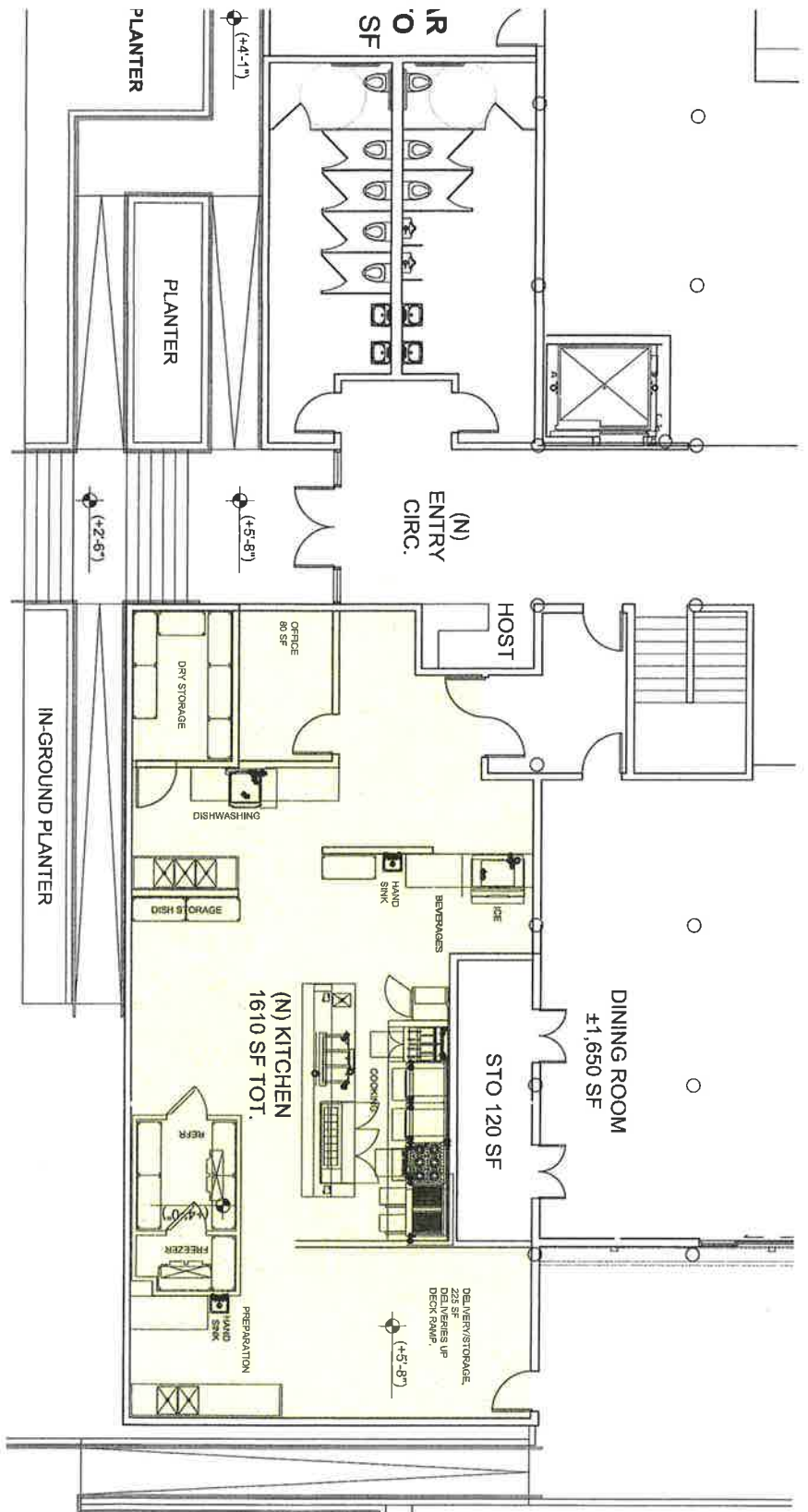
5.1





- SUMMARY**
- 1490 SF OF KITCHEN AREA TOTAL
  - DELIVERIES COME UP REAR POOL DECK RAMP
  - 225 SF OF STORAGE AT DELIVERY AREA
  - 120 SF DINING ROOM STORAGE IS PUSHED INTO KITCHEN SPACE
  - STAIR MOVED DOWN AND ACCESS CORRIDOR CREATED TO ALLOW SEPARATE KITCHEN ACCES TO DINING AND CONDOR ROOM/BAR AREAS
  - HOST AREA AT ENTRY LOBBY WITH DOOR TO KITCHEN
  - ELEVATOR MOVED ACROSS LOBBY AND FULLY INTO CONDOR/BAR AREA
  - SEPARATE ACCESS VESTIBULES FOR SERVERS AND PATRONS
  - FRONT WALL AND RESTROOMS REMAIN AS THEY WERE IN PREVIOUS VERSIONS

5-1-3



- SUMMARY**
- 1610 SF OF KITCHEN AREA TOTAL
  - DELIVERIES COME UP REAR POOL DECK RAMP
  - 225 SF OF STORAGE AT DELIVERY AREA
  - 120 SF DINING ROOM STORAGE IS PUSHED INTO KITCHEN SPACE
  - STAIR MOVED UP AND ACCESS CORRIDOR CREATED TO ALLOW SEPARATE KITCHEN ACCES TO DINING AND CONDOR ROOM/BAR AREAS
  - HOST AREA AT ENTRY LOBBY
  - ELEVATOR MOVED ACROSS LOBBY AND FULLY INTO CONDORBAR AREA
  - FRONT WALL AND RESTROOMS REMAIN AS THEY WERE IN PREVIOUS VERSIONS

52