



**PMCPOA PLANNING COMMITTEE TOWN HALLS
PRESENT**

**WINTER PREPAREDNESS
PANCAKES & PREPPING**

**with EMERGENCY PREPAREDNESS CMTE, CERT,
PMC PULSE, & PMCPOA RADIO CLUB**

HOME HARDENING - HEAT SOURCES

A photograph of a fire burning in a brick fireplace. The fire is bright and active, with several logs of wood. The fireplace is made of dark bricks, and the scene is dimly lit, with the fire providing the primary light source.

- Chimney swept once a year
- Stock up on firewood / pellets
- Make sure propane tank is full prior to a storm
- Do you have a backup heat source?!

HOME HARDENING - POWER OUTAGE

- Do you have a generator backup?
- Do you have enough flashlights and battery-operated lamps?
- Do you have extra batteries?



DO NOT use propane burning lanterns inside your house.
CO emitted will make you sick and/or kill you.

HOME HARDENING - WATER

- Do you have plenty of drinking water on hand?
- 1 gallon / person / day
- Family of 4 for 3 days? 12 gallons! (don't forget pets)
- Insulate your pipes to ensure they don't freeze

SNOW HACK:

If you're worried about your pipes freezing, put your faucets on a slow drip when the temps drop below freezing.

HOME HARDENING - FOOD & COOKING

- Stock up on shelf stable / canned foods that can be prepared without power
- Freeze-dried food is a great option for long-term storage
- Stock up on bottled water
- At least 1 week of supplies!
- Do you have a flat top wood burning stove? Can use cast iron / dutch ovens.
- What about preserving refrigerated items? Cooler? Generator?

DO NOT use a propane burning camp stove inside your house. The CO emitted will make you sick and/or kill you.

HOME HARDENING - FIRST AID & PRESCRIPTIONS

- **Keep a decent first aid kit in a safe/accessible place and know how to use it**
- **Be prepared with home remedies and medicines for colds and flus**
- **Fill prescriptions if you know a storm is rolling in**
- **Have a backup supply in case you are unable to refill for a few weeks**



A close-up photograph of a dog, possibly a dachshund, wrapped in a thick, textured blanket. The dog's face is visible through a hole in the blanket, looking directly at the camera. The background is dark, making the dog and the blanket stand out.

HOME HARDENING - WARM LAYERS

- Even with backup heat sources, it may not be feasible to heat your whole house
- Have warm layers for everyone in your family!
- Winter sleeping bags, down blankets, etc. for staying warm
- Downsize the spaces you're trying to heat

HEAT HACK:

Sleeping in a tent in your living room will maximize your body heat.

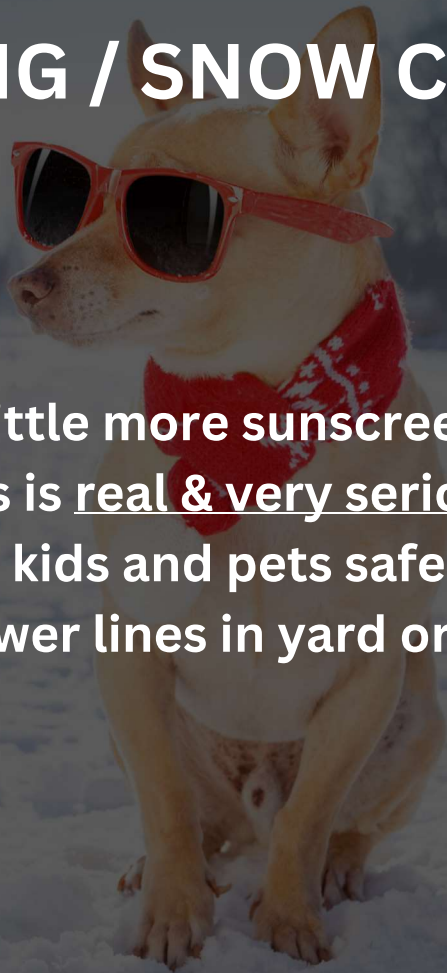
EXTERIOR PREPPING / SNOW CLEARING

- Have enough clothes to stay warm & dry?
- Natural fiber base layers (cotton/merino wool)
- Waterproof jacket, boots, & gloves?
- Boot chains for ice and slippery situations
- Snowshoes are great for getting around in heavy snowfall



EXTERIOR PREPPING / SNOW CLEARING

- Stay hydrated
- Take a break
- Sunscreen, sunscreen, a little more sunscreen
- Sunglasses! Sun blindness is real & very serious
- Mind the snowplow! Keep kids and pets safe and out of the road
- Watch out for downed power lines in yard or crisscrossing the streets



EXTERIOR PREPPING / SNOW CLEARING

- Clear decks of items that could blow off in high winds
- Shovel decks ASAP after a heavy storm (to keep from collapsing)
- Keep trees from uprooting or breaking by sweeping / shaking off snow
- Book the snow removal team early if you need help
- Bags of ice melt or water softener salt on hand for driveways / walkways
- And kitty litter for wood decks
- Berms are a part of life in PMC

SNOW HACK:

Shovel driveways, decks, berms immediately after it snows.
Once it freezes overnight, it becomes exponentially more difficult.





VEHICLE CHECK LIST

- Chains - you've got 'em and you know how to use 'em
- Full Gas Tank - if the power goes out, so do the gas pumps
- Ready to Go - park near the end of your drive, car facing the street (leave clearance for the plows and the berm!)

SNOW HACKS:

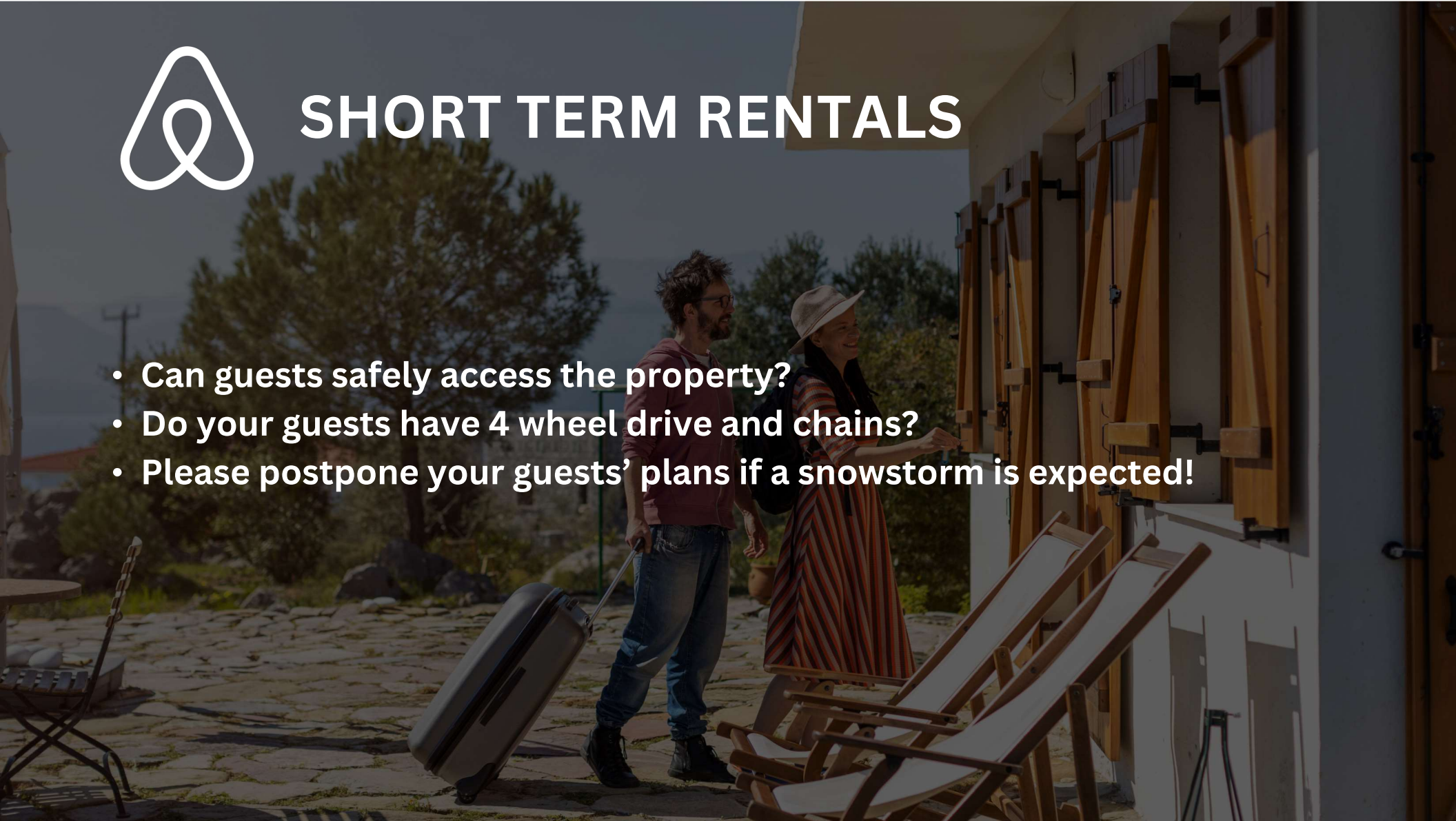
Keep windshield wipers raised so they don't freeze to your windshield
OR consider getting a windshield cover to put on prior to snowfall

Floor mats can be used under tires to gain traction if stuck



SHORT TERM RENTALS

- Can guests safely access the property?
- Do your guests have 4 wheel drive and chains?
- Please postpone your guests' plans if a snowstorm is expected!



USEFUL RESOURCES

[Direct Energy - Snow Storm Essentials Checklist](#)



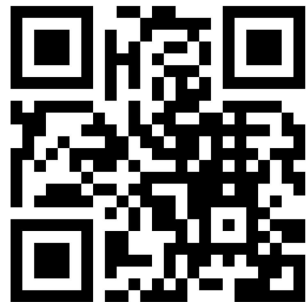
[Weather.gov - Prepare! Don't Let a Winter Storm Take You by Surprise](#)



[Weather.gov - Winter Preparedness Checklist](#)



[Ready.gov - Build a Kit](#)



The Pulse Safety Net



Community united through *volunteers* helping *neighbors*

**SIGN
UP**



A photograph of construction workers wearing green hard hats and high-visibility safety vests. They are gathered around a piece of equipment, possibly a generator or power source, in an outdoor setting. The scene is dimly lit, suggesting dusk or dawn. The workers are engaged in conversation and looking towards the equipment.

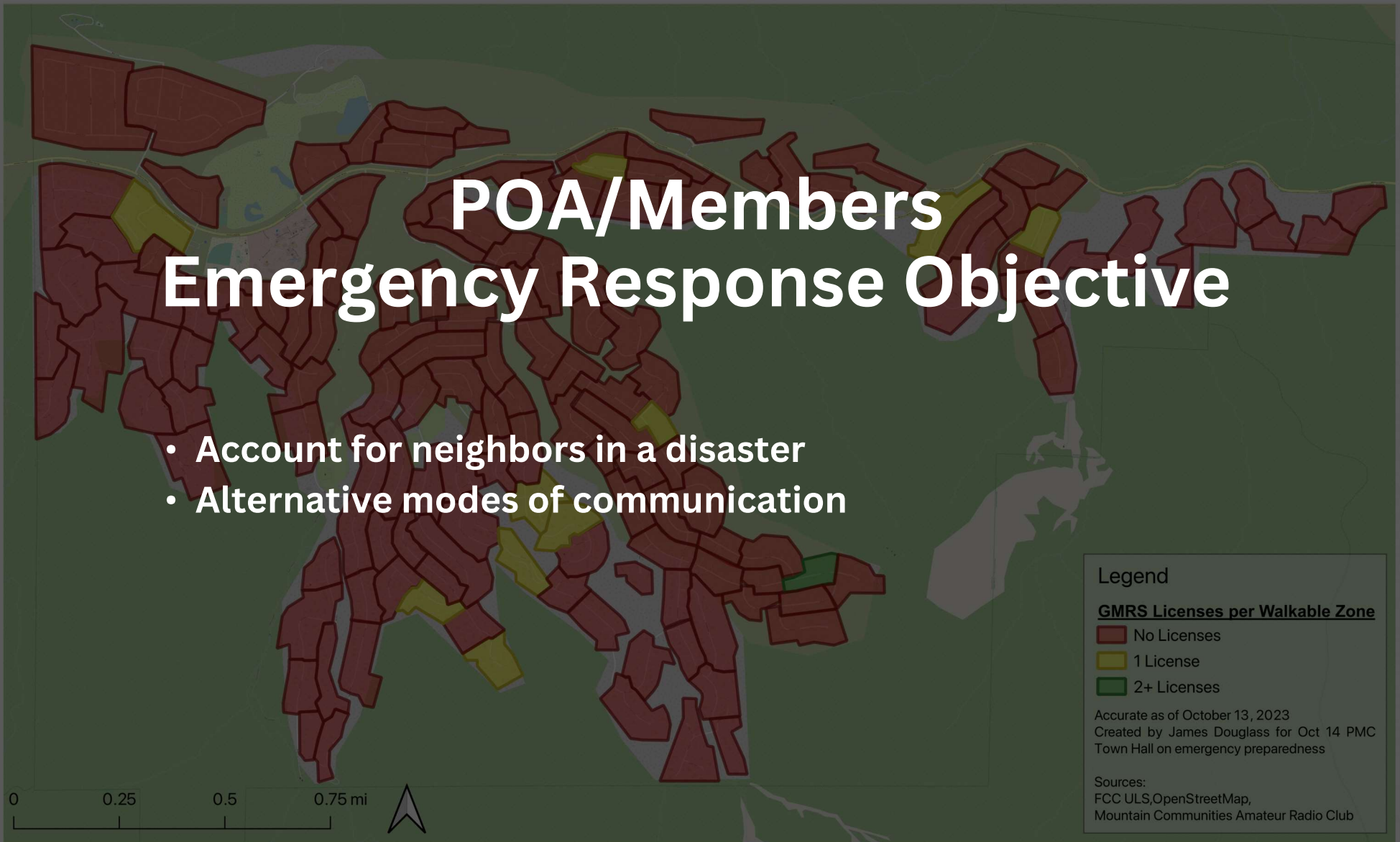
ROLES OF...

**EMERGENCY
PREPAREDNESS
COMMITTEE**

& CERT

POA/Members Emergency Response Objective

- Account for neighbors in a disaster
- Alternative modes of communication



The New York Times

Feb 24, 2023

Scenes From the California Storm




Pine Mountain Club on Friday. Jenna Schoenefeld for The New York Times




A number of residents in Pine Mountain Club, Calif., were snowed in on Saturday after a rare blizzard in Southern California dumped significant snow overnight, adding to totals from the previous day. Jenna Schoenefeld for The New York Times



Jenna Schoenefeld for The New York Times

A photograph of a red cabin with a green roof, partially obscured by snow-covered trees and a thick layer of snow on the ground. The cabin has a small window on the upper level and two windows on the lower level. The scene is heavily snowed out, with snow covering the ground, trees, and the cabin's roof.

8 feet of snow on the ground
Power's out
Cell service isn't working
Your neighbor's out of food.

A photograph of a red cabin with a green roof, partially obscured by snow-covered trees and a thick layer of snow on the ground. The image is dimmed to serve as a background for text.

8 feet of snow on the ground
Power's out
Cell service isn't working

Your neighbor's out of food.

Radios are our best option

PMC Radio Safety Net



- Goals:
 - **Reliability:** call for help when phones are down
 - **Redundancy:** Increase odds of having everyone in PMC within reach
- Depends on:
 - **License:** FCC GMRS license (\$35/family, 10 years)
 - **Equipment:** Purchase a **compatible*** GMRS radio
 - **Configuration:** Radio programmed to use PMC channels
 - **Practice:** Weekly checkins by radio



Program sign-up



Guide: Apply online
for GMRS License



UV-5G (2-pack)
amazon



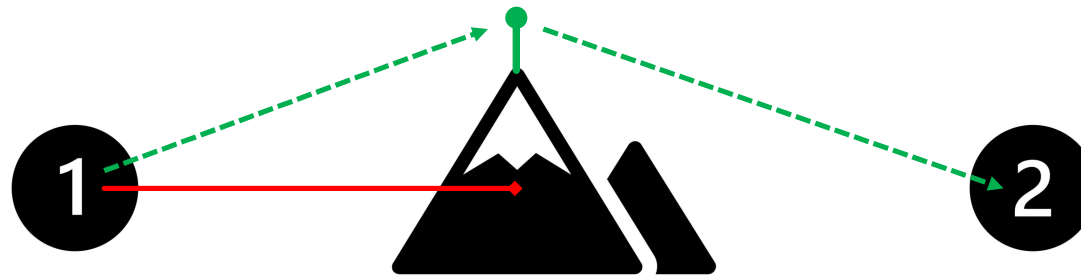
Licensing
Walkthrough

***compatibility**

Not all GMRS radios are compatible.
Email jdouglass@hey.com if in doubt

GMRS: Upgraded Walkie-Talkies

- FRS (Family Radio Service): easy, inexpensive radios
- GMRS (General Mobile Radio Service): similar, upgraded
 - Same channels as FRS walkie-talkies
 - License required (\$35/family for 10 years)
 - Longer range: radios broadcast at higher power
 - Can use **repeaters** to extend range

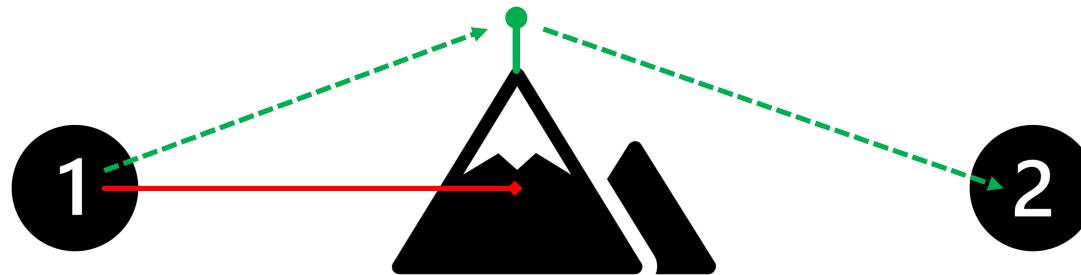


GMRS: Upgraded Walkie-Talkies

- FRS (Family Radio Service): easy, inexpensive radios
- GMRS (General Mobile Radio Service): similar, upgraded
 - Same channels as FRS walkie-talkies
 - License required (\$35/family for 10 years)
 - Longer range: radios broadcast at higher power
 - Can use **repeaters** to extend range



Great for PMC!



Ham Radio: Communicate with the World

- FRS, GMRS are simplified radio; Ham radio is more powerful
- Long distance communications possible
 - Repeater networks across CA accessible from PMC
 - On some frequencies, can reach other countries
 - Talk to the International Space Station 📡
- Varied, interesting applications (ARES, packet, “fox hunting”, “QRP”, etc.)
- Test required to obtain license (no morse code needed!)
- Come talk to the radio club if you’d like to learn more!
 - 3rd Sunday of the month, every Monday on KC6WRD
 - License not needed to join monthly meetings



EP Committee needs Volunteers!

Help PMC prepare for emergencies!

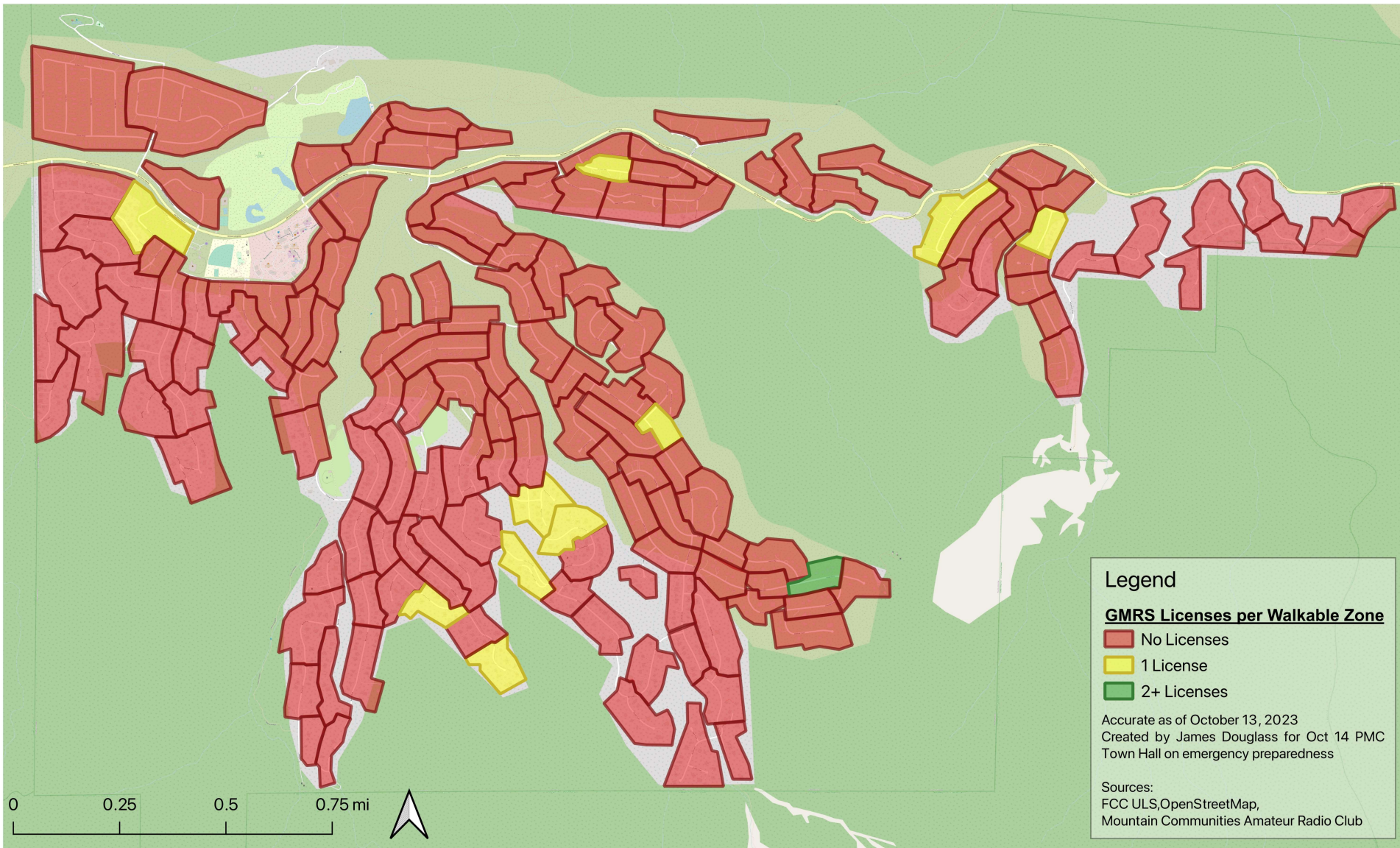
Radios are only part of the solution.

Help us plan the rest.

We meet the 4th Saturday of the month, 9am in
the Pavilion room

<https://bit.ly/pmc-ep>





PMC Radio Safety Net



- Goals:
 - **Reliability:** call for help when phones are down
 - **Redundancy:** Increase odds of having everyone in PMC within reach
- Depends on:
 - **License:** FCC GMRS license (\$35/family, 10 years)
 - **Equipment:** Purchase a **compatible*** GMRS radio
 - **Configuration:** Radio programmed to use PMC channels
 - **Practice:** Weekly checkins by radio



Program sign-up



Guide: Apply online
for GMRS License



UV-5G (2-pack)
amazon



Licensing
Walkthrough

***compatibility**

Not all GMRS radios are compatible.
Email jdouglass@hey.com if in doubt

